

May 11, 2023

Ms. Maria Liwanag C. Reyes
Network Division Head
Subic Bay Metropolitan Authority

Subject: Proposal for Dedicated Internet Access Economy (DIA Eco) Service

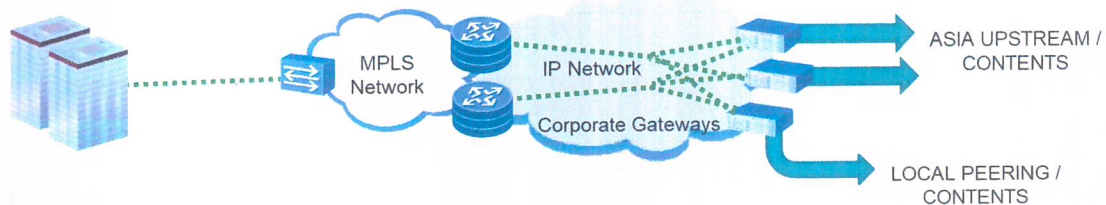
Dear Ms. Reyes,

Thank you for giving **CONVERGE ICT INFORMATION AND COMMUNICATIONS TECHNOLOGY SOLUTIONS, INC.** the opportunity to serve you.

CONVERGE ICT, being a CUSTOMER-focused telecommunications company, offers suite of Information and Communications Technology (ICT) solutions for Large Corporate and Small and Medium Enterprise users. Our fully-owned and managed network is built through a backbone infrastructure utilizing DWDM, MPLS IP Core and Packet Transport Network complemented by a pure optical fiber access network.

We are currently engaged in providing Internet, Private Data, Data Center and other Value-Added Services suitable for our CUSTOMER needs. With these network and spectrum of services, **CONVERGE ICT** is fully committed to deliver its service with high reliability, rapid deployment, fast restoration time, competitive pricing and devoted account management.

Based on the information we have gathered, we are pleased to present our **Dedicated Internet Access (DIA) Economy Service** – An economical version of our DIA service that balances performance and cost while delivering enterprise grade service, allowing you to do business transaction and activities over the internet. DIA Economy is designed for enterprise customers that requires dedicated, but basic internet access for applications that are non-critical and non-real time in nature.



FINANCIAL SUMMARY

Installation Address	Bandwidth DIA Economy	Monthly Recurring Charge (MRC) – Vat Ex	One-Time Charge (OTC) – Vat Ex
SBMA	DIA Eco 250Mbps	Php 83,000.00	Renewal

Notes:

- 12 months contract
- The monthly bill will be 30 calendar days after receipt of a valid billing statement.
- The installation period will be 15-45 working days after receipt of PO.
- Inclusive of Static /29 Public IP Address with 5 usable IP.
- Standard CUSTOMER Premise Equipment (CPE) included.
- Routers and switches are not included but can be provided with charge if required
- Customer to allow and assist on the use of existing building horizontal conduits necessary for the installation, or provide in case not available

Attached are the Terms and Conditions related to your subscription to CONVERGE ICT Service.